

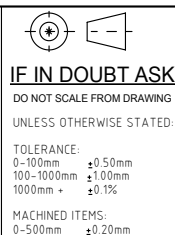
SECTION A-A

DESIGN DATA	
DESIGN CODE	AS 1210-2010
CONSTRUCTION CLASS / CATEGORY	3
HAZARD LEVEL (AS 4343:2014)	E
SEISMIC DESIGN COEFFICIENT (NZS 1170.5)	0.38 HORIZ / 0.26 VERT
WIND LOADING (NZS 4203:1992)	N/A
DESIGN PRESSURE	-101kPag
HYDRAULIC TEST PRESSURE	152 kPag
DESIGN TEMPERATURE	0 - 50°C
CORROSION ALLOWANCE	0 mm
CONTENTS	RAW SEWERAGE
VESSEL FLOODED VOLUME	9552 LITRES
VESSEL DRY MASS	4,150kg
WELD PROCEDURE QUALIFICATION TO	AS/NZS 3992
WELDER QUALIFICATION TO	AS/NZS 3992
NON-DESTRUCTIVE EXAMINATION TO	AS 3920.1
NON-DESTRUCTIVE EXAMINATION	100% VISUAL
MATERIAL	
PLATE	ASTM A240-316L
DOMED ENDS	ASTM A240-316
PIPE	ASTM A312-316
SOCKETS	ASTM A182M-316
FLANGES	ASTM A182-316



175 Riverlea Road  
PO Box 350  
Hamilton, New Zealand  
Phone: +64 7 856 6225  
Fax: +64 7 856 6226

THIS DRAWING IS THE  
PROPERTY OF PFS  
ENGINEERING  
and must not be copied,  
reproduced or  
communicated without  
written permission. All  
rights to copyright or  
patentable or invention  
being reserved.



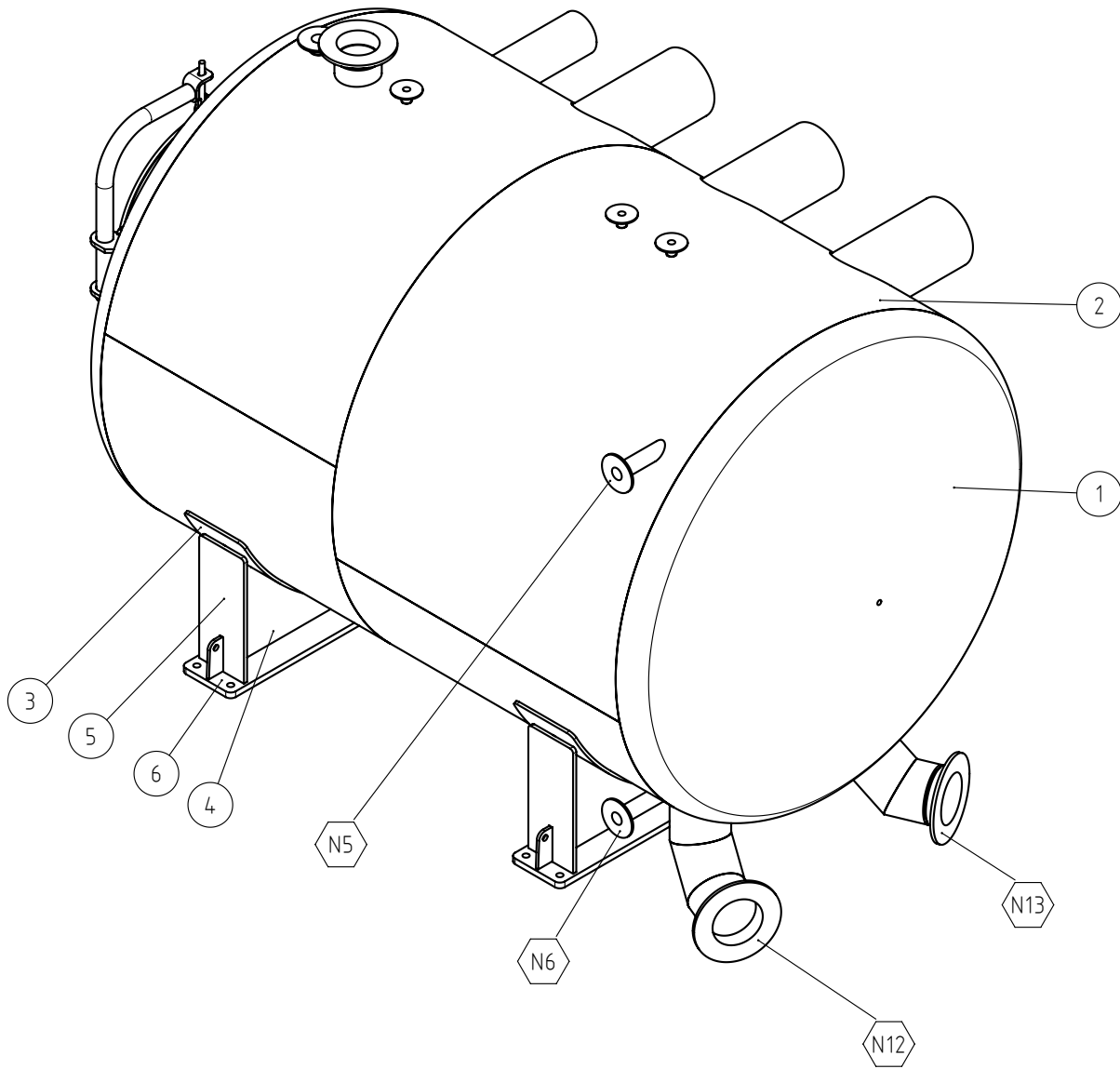
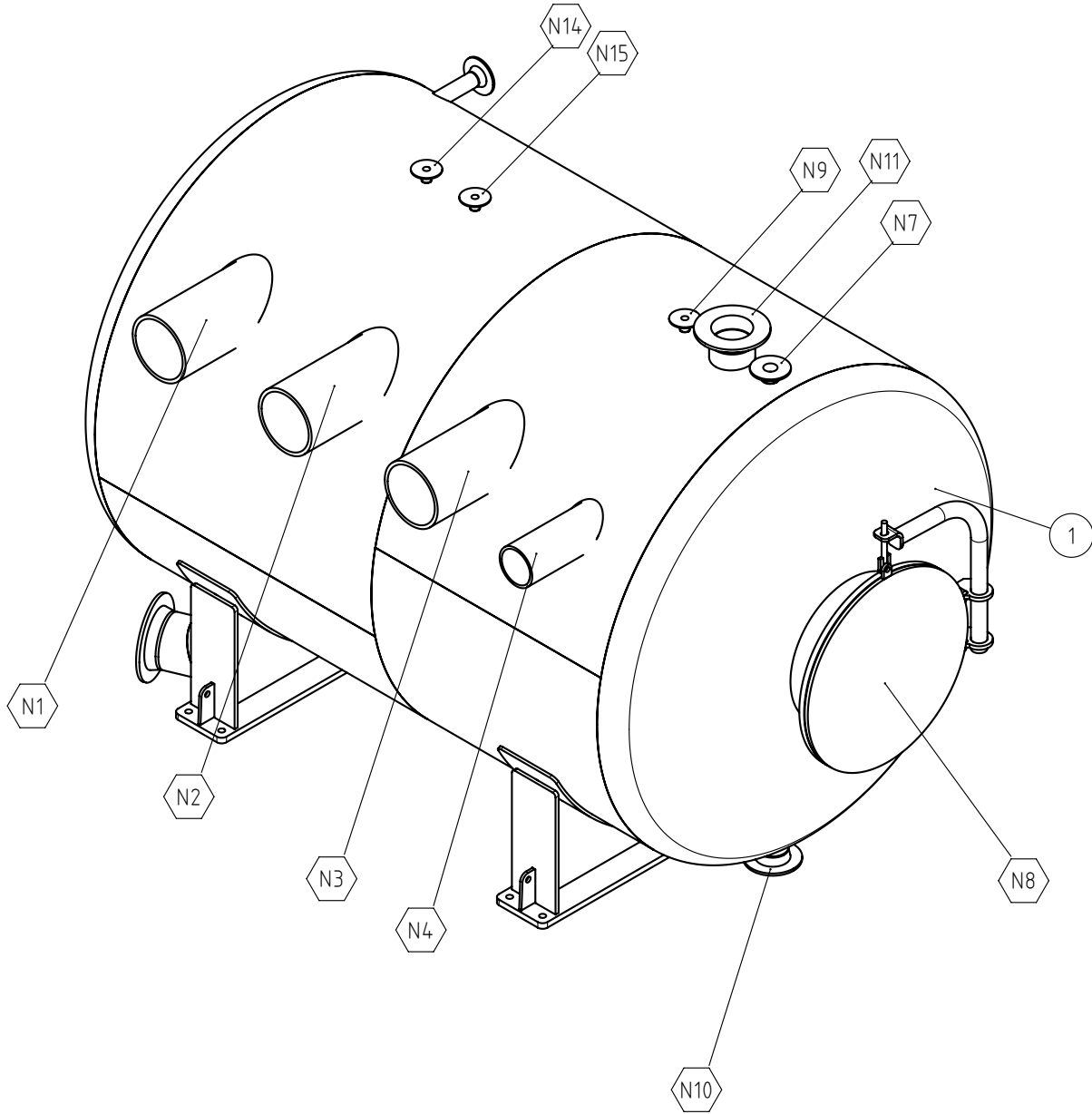
REV	DESCRIPTION	NAME	DATE
D	UPDATED FOR 100 YEAR DESIGN LIFE	MS	13/08/2019
C	UPDATED FOR 100 YEAR DESIGN LIFE	MS	6/08/2019
B	ADDED BOM & DESIGN DATA	MS	13/06/2019
A	FOR APPROVAL ONLY	MS	29/05/2019

DRAWN	CHECKED	APPROVED
MS	CB	BS
DATE DRAWN	5/08/2019	
ISSUE DATE	13/08/2019	
CUSTOMER DWG #/REV	N/A	

JOB/PROJECT	20731 - FLOVAC 9000L VESSEL	
DESCRIPTION	WASTEWATER PUMP STATION COLLECTION TANK	
SHEET DESCRIPTION	GENERAL ARRANGEMENT	
DWG No.	20731-P-1000-000	REV. D
SHEET	1 / 2	SIZE A3

ITEM NO.	DESCRIPTION	MATERIAL
1	TOROSPHERICAL DOME, 16mm	316L S/S
2	PLATE, 16mm	316L S/S
3	PLATE, 12mm	316L S/S
4	PLATE, 12mm	316L S/S
5	PLATE, 16mm	316L S/S
6	PLATE, 25mm	316L S/S

NOZZLE SCHEDULE					
TAG	SIZE	MATERIAL	DESCRIPTION	CONNECTION	NOTES
N1	250NB SCH80	316 SS	VACUUM MAIN	PLAIN END	WITH 45° ELBOW INSIDE
N2	250NB SCH80	316 SS	VACUUM MAIN	PLAIN END	WITH 45° ELBOW INSIDE
N3	250NB SCH80	316 SS	VACUUM MAIN	PLAIN END	WITH 45° ELBOW INSIDE
N4	150NB SCH80	316 SS	VACUUM MAIN (SPARE)	PLAIN END	WITH 45° ELBOW INSIDE
N5	50NB SCH80	316 SS	MULTITRODE TOP	TABLE D WN FLANGE	
N6	50NB SCH80	316 SS	MULTITRODE BOTTOM	TABLE D WN FLANGE	
N7	50NB SCH80	316 SS	SUMP VALVE CONNECTION	TABLE D WN FLANGE	
N8	6100D x16THK	316 SS	MAN WAY	SO FLANGE WITH BLIND	WITH DAVIT AND BLIND FLANGE
N9	25NB SCH80	316 SS	A/L SEPARATOR DRAIN	TABLE D WN FLANGE	
N10	100NB SCH80	316 SS	DRAIN LINE	TABLE D WN FLANGE	
N11	150NB SCH80	316 SS	A/L SEPARATOR	TABLE D WN FLANGE	
N12	200NB SCH80	316 SS	SEWAGE PUMP OUTLET	TABLE D WN FLANGE	90° ELBOW WELDED ON
N13	200NB SCH80	316 SS	SEWAGE PUMP OUTLET	TABLE D WN FLANGE	90° ELBOW WELDED ON
N14	25NB SCH80	316 SS	INSTRUMENT PANEL	TABLE D WN FLANGE	
N15	25NB SCH80	316 SS	INSTRUMENT PANEL	TABLE D WN FLANGE	



175 Riverlea Road  
PO Box 350  
Hamilton, New Zealand  
Phone: +64 7 856 6225  
Fax: +64 7 856 6226

THIS DRAWING IS THE  
PROPERTY OF PFS  
ENGINEERING  
and must not be copied,  
reproduced or  
communicated without  
written permission. All  
rights to copyright or  
patentable or invention  
being reserved.

**IF IN DOUBT ASK**  
DO NOT SCALE FROM DRAWING  
UNLESS OTHERWISE STATED:  
TOLERANCE:  
0-100mm ±0.50mm  
100-1000mm ±1.00mm  
1000mm + ±0.1%  
MACHINED ITEMS:  
0-500mm ±0.20mm

DRAWN MS	CHECKED CB	APPROVED BS	JOB/PROJECT 20731 - FLOVAC 9000L VESSEL
DATE DRAWN 5/08/2019	DESCRIPTION WASTEWATER PUMP STATION COLLECTION TANK		
ISSUE DATE 13/08/2019	SHEET DESCRIPTION BOM NOZZLE LAYOUT		
CUSTOMER DWG #/REV N/A	DWG No. 20731-P-1000-000		REV D
		SHEET 2 / 2	SIZE A3